

# Neighbour Engagement

## Introduction



Aerial view of the runway extension site

Approved runway extension

## Introduction

Thank you for viewing these neighbour engagement banners, which provide further information on the construction of Southampton Airport's runway extension. We have prepared these materials as part of the airport's commitment to keeping local neighbours informed about the runway plans.

The display banners that follow provide an overview of the approved runway scheme and set out key details about the construction, including what you can expect to see on site, the timescales, and site working hours.

## Questions and concerns

These materials also provide details about the dedicated community app we have developed to keep residents up-to-date about the progress of the runway construction.

The **SOU Runway** app will offer an overview of the project, and enable neighbours to send in queries, ask questions, or raise concerns about the construction process. The team on the ground will then be able to review and respond in real-time.

More information about the SOU Runway app, and how to download it, can be found on the final display board.

### Further Information

For more information about the approved runway extension, or to register for updates, please visit: [www.southamptonairport.com/planning/runway](http://www.southamptonairport.com/planning/runway)

Our runway website also includes an FAQs section, which will provide more information on the upcoming Enhanced Noise Insulation Scheme and the Community Fund over the coming months, which were both approved as part of the runway application.

### Overview

In August 2022, final confirmation was given to Southampton Airport's plans to extend the northern end of our runway.

Since the approval of our application, Southampton Airport has been working to finalise the details of the runway's construction.

The consented runway extension will see the blue area within the above image converted to tarmac, delivering an additional 164m of runway.

It is a short extension (equivalent to one-and-a-half football pitches) that remains fully within our existing boundaries.

### For anything else

If you have any other questions about the consented runway plans that you would like to put to the airport team, you can contact our dedicated runway email address: [runway@southamptonairport.com](mailto:runway@southamptonairport.com)



# Construction Overview

Commitments and works to be undertaken



## Key

- |                                  |                       |
|----------------------------------|-----------------------|
| <b>1</b> Edge of existing runway | <b>3</b> Turning pad  |
| <b>2</b> 164m of new tarmac      | <b>4</b> Blast screen |

## Commitments

Southampton Airport is committed to openness regarding the construction of our runway extension.

To deliver the runway scheme, Southampton Airport has appointed **VolkerFitzPatrick** as its principal contractor. Both the airport and VolkerFitzPatrick have committed to take a responsive and listening approach to residents during the construction period.

In line with the planning consent, we have also agreed a **Construction Environmental Management Plan** with Eastleigh Borough Council, in which we committed to a **considerate approach to construction**.

VolkerFitzPatrick is a member of the Considerate Constructors Scheme (CCS) and will comply with high industry standards relating to the appearance of the site, respect for the community, importance of safety, and the protection of the environment.

This includes a range of measures to **minimise and mitigate disruption** to local neighbours.

### Works to be undertaken – what can you expect to see?

Over the course of the construction period, the following elements will be delivered on site:

#### Permanent changes to the site

- 164m of new tarmac, to enable new airline operators
- A wider ‘turning pad’, to allow planes to u-turn at the end of the runway
- A new blast screen, to minimise the impact of airport operations
- Associated changes to drainage and lighting along the runway
- Realignment of the northern perimeter fence

- Related works to the airside perimeter road and landside access track

#### Temporary changes during construction

- A landside compound on Mitchell Way for contractors
- An airside compound to the east of the runway for contractors
- A haul road between the airside perimeter and the construction site



# Construction Timescales

Milestones and working hours



## Project Milestones

Initial enabling activity began on **30th January 2023**, with the establishment of the temporary airside and landside site compounds.

This will be followed by the realignment of the northern perimeter fence, works to the airside perimeter road and landside access track, and the delivery of the temporary haul road.

From **3rd April 2023**, residents should begin to see the delivery of earthworks for the runway and lighting upgrades, with the paving starting in May.

Once paved, the runway marking and site restoration should take place in July, with a completion date on site anticipated on **17th August 2023**.

### Milestones

- 30th January – 3rd April**  
Enabling works, including site compound establishment
- 3rd April – 20th May**  
Earthworks for runway extension
- 27th May – 15th July**  
Runway pavement works
- 3rd March – 26th July**  
Runway lighting upgrade
- 12th July – 29th July**  
Runway line marking and landscaping
- 17th August**  
Anticipated completion of works

## Working Hours

The working hours for the runway extension were established as part of the planning application process.

Working hours and protocols for activity on site were also set out in the **Construction Environmental Management Plan**, which has been approved by Eastleigh Borough Council.

The airport is accountable to the Council for the works undertaken.

As agreed within the application, construction activity will take place at night.

Construction activity will be carried out on **weekdays between 8.00pm and 6.00am**.

No potentially noisy activity will be undertaken between **6.00am on Saturday morning and 8.00pm on Monday**.

The airport will operate as normal during the construction period.



# Considerate Construction

Noise and vibrations



## Considerate Construction

Southampton Airport is committed to ensuring that the construction process for the runway extension results in the least possible disruption. We have therefore agreed a number of measures with Eastleigh Borough Council to minimise and mitigate disruption to local neighbours. These are set out within our approved Construction Environmental Management Plan.

Southampton Airport and VolkerFitzPatrick will establish channels of communication to ensure that residents and neighbours with concerns about the construction works can contact us throughout the construction period and secure a response from the team. This will be achieved via the **SOU Runway** app and a dedicated email address, details of which are outlined in the final banner of these materials.

## Noise and Vibrations

As part of the Construction Environmental Management Plan, Southampton Airport's contractor will take steps to control and limit noise and vibration levels.

We will work hard to ensure that local neighbours and other sensitive receptors (such as nearby wildlife and environmental sites) are protected from excessive disturbance during the construction.

### **This will be achieved through the following measures:**

- Working hour restrictions will be adhered to strictly
- Plant will be positioned so that emissions do not cause nuisance to neighbours or sensitive receptors
- The site layout has been designed to avoid unnecessary noise and vibration, including via a one-way system for traffic
- The haul routes will be inspected and maintained regularly to reduce site traffic noise from loose surfaces
- Construction methods will be chosen to minimise noise and vibration, paying particular attention to areas closer to residential properties
- Cut-off trenches will be used near sensitive receptors to limit the transmission of vibrations
- Where possible, noise will be controlled at source
- Where noise cannot be avoided, screening and acoustic enclosures will be utilised to minimise noise transmission outside the construction site

Initial readings of pre-construction noise in sensitive areas around the site have been taken, including at Campbell Road, Wide Lane, and Southampton Road, to establish current background noise levels.

Noise and vibration monitoring at these locations will take place throughout the construction period. This will ensure that levels do not become excessive and will allow us to identify any issues in real-time. Should any problems arise, additional noise and vibration controls will be put in place.



## Welcome to SouthamptonAirport



### Dust

Southampton Airport has committed to a range of measures to control and minimise the impact of dust during the runway construction.

#### These will include:

- Dust-creating activities, such as crushing materials or cutting surfaces, will be completed away from sensitive or residential areas, where possible
- Dust-producing activities will be dampened down at source
- Cutting, grinding or sawing equipment will be used in conjunction with suitable dust suppression techniques, including water sprays
- Debris netting during activities likely to produce dust
- Regularly damping down and cleaning of haul roads with mobile suppression systems
- Inspections will be undertaken regularly to monitor dust levels and the effectiveness of suppression methods

Similarly, **waste from the site will be stored away from residential or sensitive areas and will be removed as soon as possible.**

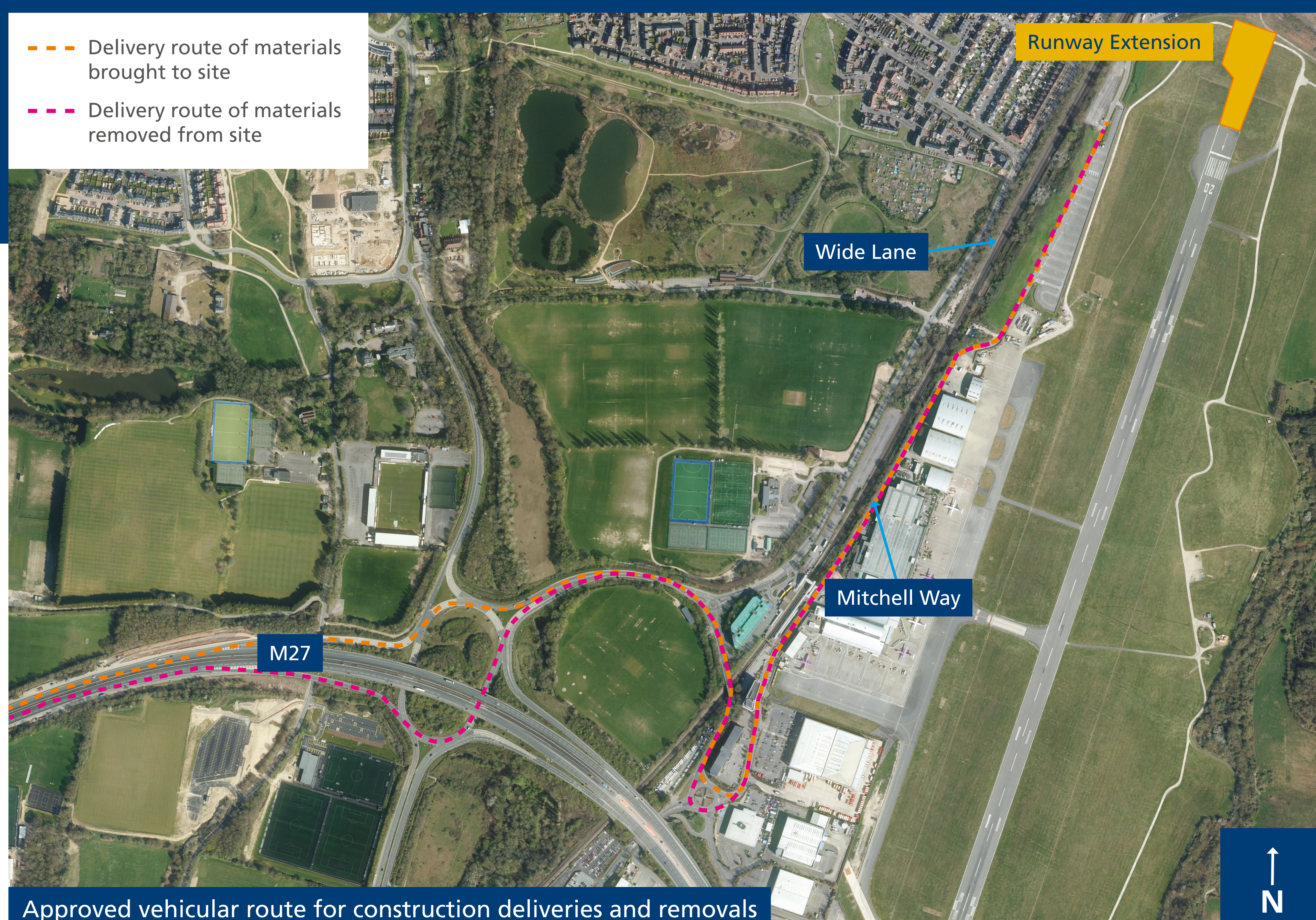
In addition, Southampton Airport and VolkerFitzPatrick will ensure that the full **Dust Management Strategy** is available for residents and neighbours to access via the app (which will be detailed on the final banner). Alternatively, residents can secure a copy of the document by emailing: **[runway@southamptonairport.com](mailto:runway@southamptonairport.com)**.

Dust monitoring will be carried out in accordance with Eastleigh Borough Council's planning conditions. This will include a baseline boundary dust monitoring survey, a monitoring plan, and regular updates to the Council during construction.



# Considerate Construction

Management of roads and vehicles



## Local Roads

To minimise and mitigate traffic disruption to the community and local road users, the Construction Environmental Management Plan sets out specific vehicular routes for construction vehicles.

These two routes will see vehicles travelling to and from the M27 via Mitchell Way, avoiding Wide Lane. This decision was taken to avoid large vehicles passing through the residential areas to the north of the airport and to reduce traffic impacts on local neighbours. It will also ensure that heavy goods vehicles are restricted from travelling through the Air Quality Management Area on Southampton Road towards Eastleigh.

All drivers and contractors will be provided with a copy of the two routes and this will be monitored to ensure compliance. Temporary signage will be installed to help direct traffic to the site.

## Construction Vehicles

- All vehicles carrying loose or potentially dusty material will be covered with sheets
- Drop heights will be minimised from conveyors, loaders, hoppers, and other handling vehicles
- Vehicles will be well maintained to minimise pollution
- Maximum speed limits of 5mph on unsurfaced routes and 10mph on surfaced routes will be imposed in the construction area
- Wheel washing facilities will be provided at the entrance/exit point of the construction site
- Regular sweeping along Mitchell Way (two to three times per shift) and, if needed, the road sweeper will be deployed more widely



# Contacting Us

Our app, and staying in touch



## SOU Runway – our dedicated app

To keep local neighbours up-to-date on the progress of the runway construction, the airport has developed a community app called **SOU Runway**.

The app will provide residents with an overview of the project, as well as regular updates on the works and any changes on site.

**Download the app from the Apple App Store or Google Play by searching “SOU Runway” or scanning the QR code opposite.**

## Concerns and questions

The main purpose of the app is to enable local residents and neighbours living close to the runway extension site to send in queries, ask questions, or raise concerns about the construction.

Through the app, you will be able to send a query or raise a complaint with the airport's contractor VolkerFitzPatrick. The team on the ground will then be able to respond in real-time and consider how to address any concerns.



Scan to download the app

## FAQs and Register for Updates

The airport hopes that you found these neighbour engagement banners useful.

If you would like any further information about Southampton Airport's approved runway extension plans, or would like to register for updates, please visit our website, which will have the latest updates from our team.

Our runway website also includes an FAQs section, which will provide more information on the upcoming Enhanced Noise Insulation Scheme and the Community Fund over the coming months, which were both approved as part of the runway application.

**[www.southamptonairport.com/planning/runway](http://www.southamptonairport.com/planning/runway)**

## Further information about the runway plans

Alternatively, if you have any questions about the consented runway plans that you would like to put to the airport team directly you can contact us via our dedicated runway email address: **[runway@southamptonairport.com](mailto:runway@southamptonairport.com)**